



IVA0 MEXICO SPECIAL OPERATIONS DIVISION

**ZAPOPAN AFB, MEXICO**

**MMZP**

BAM 5 ZAPOPAN  
N20 45.3 W103 27.9

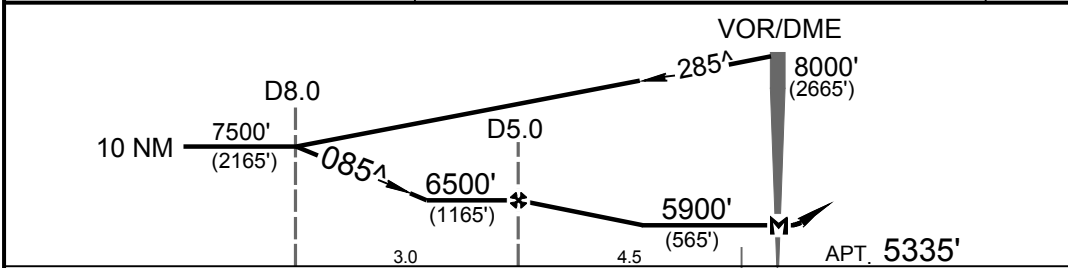
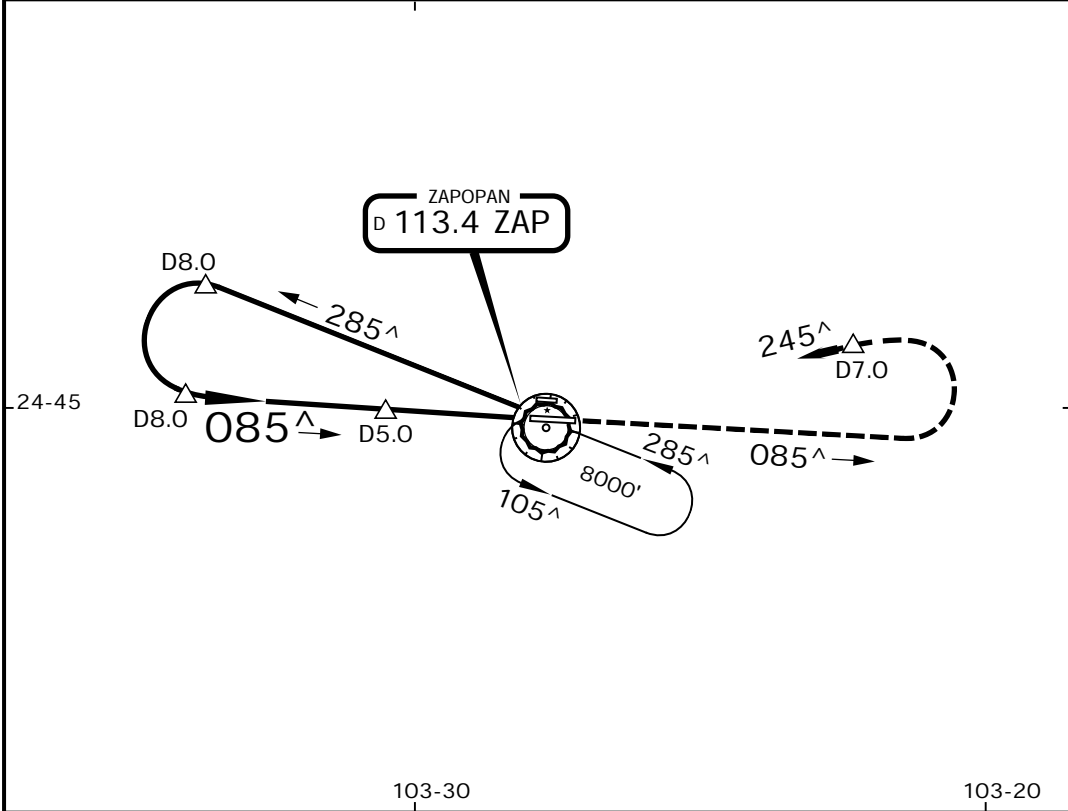
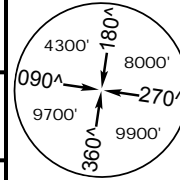


11 OCT 07

FAMV 05-2

VOR DME-1 Rwy 08

*GUADALAJARA Approach (R) 119.3 120.8		ZAPOPAN Military Flights 121.2		ZAPOPAN Tower 126.2	
VOR ZAP 113.4	Final Apch Crs 085^	Minimum Alt D5.0 6500' (1165')	MDA(H) 5900' (565')	Apt Elev 5335'	
<p>MISSED APCH: Climb outbound on ZAP VOR R-085, make a LEFT teardrop turn to ZAP VOR within 10 NM to the minimum holding altitude.</p>					
<p>Alt Set: MB (IN on req) Apt Elev: 181 MB Trans level: FL195 Trans alt: 18500' (13165')</p>					



MAP at VOR				PAPI	ZAP on 113.4 R-085	LT within 10 NM	ZAP 113.4
------------	--	--	--	------	--------------------	-----------------	-----------

CAT	STRAIGHT-IN LANDING RWY 08		Max Kts	CIRCLE-TO-LAND	
	MDA 5900'	MDH 565'		MDA(H)	
A	1	( 1600 M )	90	6100' (765') -1	
B	1 1/4	( 2000 M )	120	6220' (885') -1 3/4	
C	1 1/2	( 2400 M )	140	6380' (1045') -2	
D			165		



IVAO MEXICO SPECIAL OPERATIONS DIVISION

**ZAPOPAN AFB, MEXICO**

**MMZP**

BAM 5 ZAPOPAN  
N20 45.3 W103 27.9

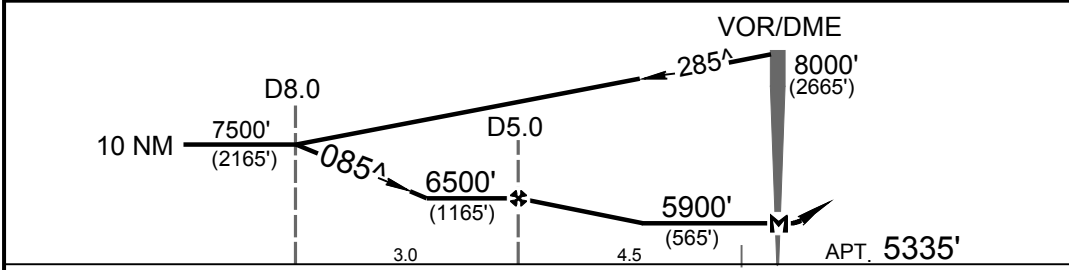
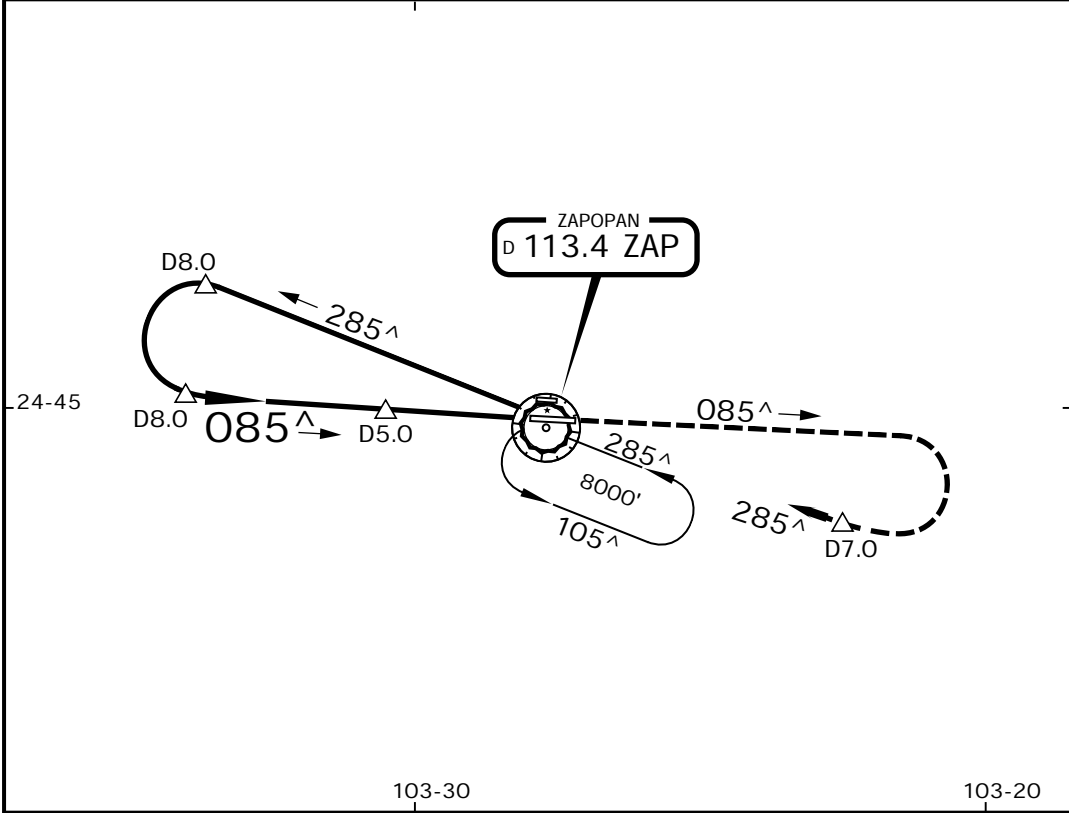
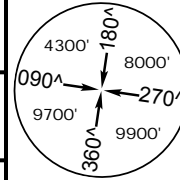


11 OCT 07

FAMV 05-3

VOR DME-2 Rwy 08

*GUADALAJARA Approach (R) 119.3 120.8		ZAPOPAN Military Flights 121.2		ZAPOPAN Tower 126.2	
VOR ZAP 113.4	Final Apch Crs 085^	Minimum Alt D5.0 6500' (1165')	MDA(H) 5900' (565')	Apt Elev 5335'	
<p>MISSED APCH: Climb outbound on ZAP VOR R-085, make a RIGHT teardrop turn to ZAP VOR within 10 NM to the minimum holding altitude.</p>					
<p>Alt Set: MB (IN on req) Apt Elev: 181 MB Trans level: FL195 Trans alt: 18500' (13165')</p>					



MAP at VOR	PAPI	ZAP on 113.4 R-085	RT within 10 NM	ZAP 113.4
------------	------	--------------------	-----------------	-----------

CAT	STRAIGHT-IN LANDING RWY 08		Max Kts	CIRCLE-TO-LAND	
	MDA 5900'	MDH 565'		MDA(H)	
A	1	( 1600 M )	90	6100' (765') -1	
B	1 1/4	( 2000 M )	120	6220' (885') -1 3/4	
C	1 1/2	( 2400 M )	140	6380' (1045') -2	
D			165		

NOTES & CHANGES: Procedure, new FAMV chart format. Only for Flight Simulation, Don't use for Real Navigation Purposes.



IVAO MEXICO SPECIAL OPERATIONS DIVISION

**ZAPOPAN AFB, MEXICO**

**MMZP**

BAM 5 ZAPOPAN  
N20 45.3 W103 27.9

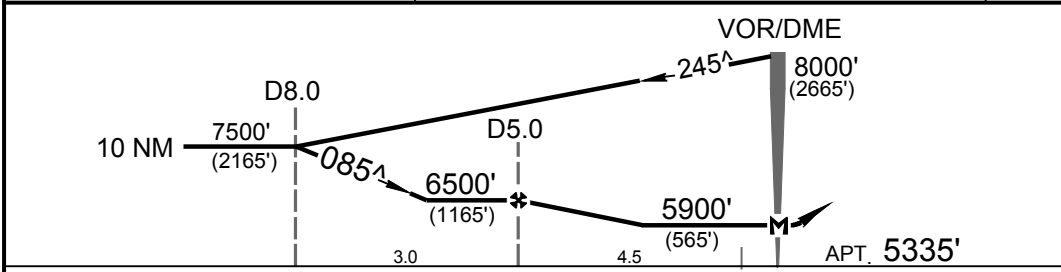
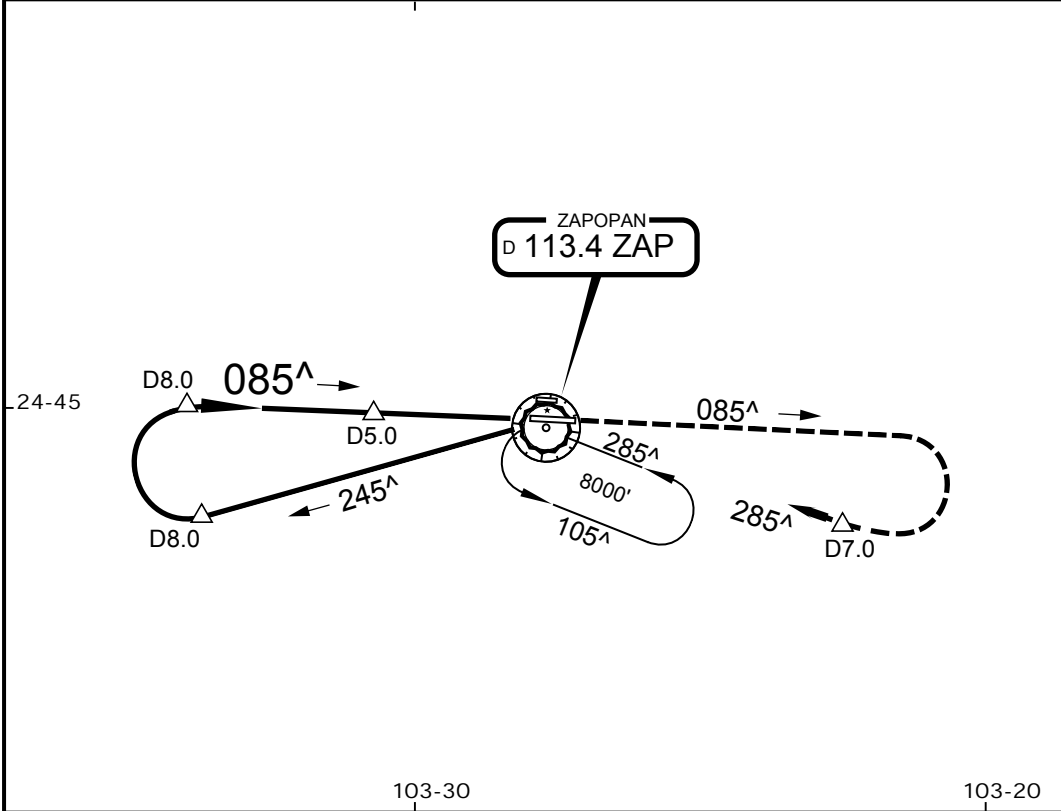
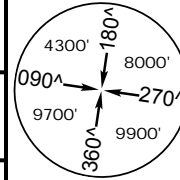


11 OCT 07

FAMV 05-4

VOR DME-3 Rwy 08

*GUADALAJARA Approach (R) 119.3 120.8		ZAPOPAN Military Flights 121.2		ZAPOPAN Tower 126.2	
VOR ZAP 113.4	Final Apch Crs 085 <sup>^</sup>	Minimum Alt D5.0 6500' (1165')	MDA(H) 5900' (565')	Apt Elev 5335'	
MISSED APCH: Climb outbound on ZAP VOR R-085, make a RIGHT teardrop turn to ZAP VOR within 10 NM to the minimum holding altitude.					
Alt Set: MB (IN on req) Apt Elev: 181 MB Trans level: FL195 Trans alt: 18500' (13165')					



MAP at VOR	PAPI	ZAP on 113.4 R-085	RT within 10 NM	ZAP 113.4
------------	------	--------------------	-----------------	-----------

CAT	STRAIGHT-IN LANDING RWY 08		Max Kts	CIRCLE-TO-LAND	
	MDA 5900'	MDH 565'		MDA(H)	
A	1	( 1600 M )	90	6100' (765') -1	
B	1 1/4	( 2000 M )	120	6220' (885') -1 3/4	
C	1 1/2	( 2400 M )	140	6380' (1045') -2	
D			165		

NOTES & CHANGES: Procedure, new FAMV chart format. Only for Flight Simulation, Don't use for Real Navigation Purposes.



IVAO MEXICO SPECIAL OPERATIONS DIVISION

**ZAPOPAN AFB, MEXICO**

**MMZP**

BAM 5 ZAPOPAN  
N20 45.3 W103 27.9

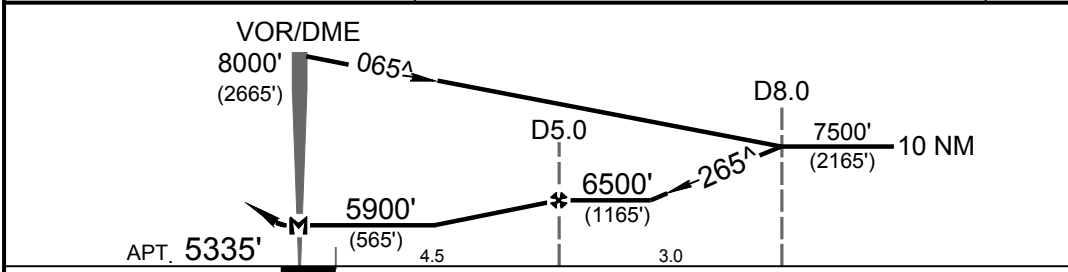
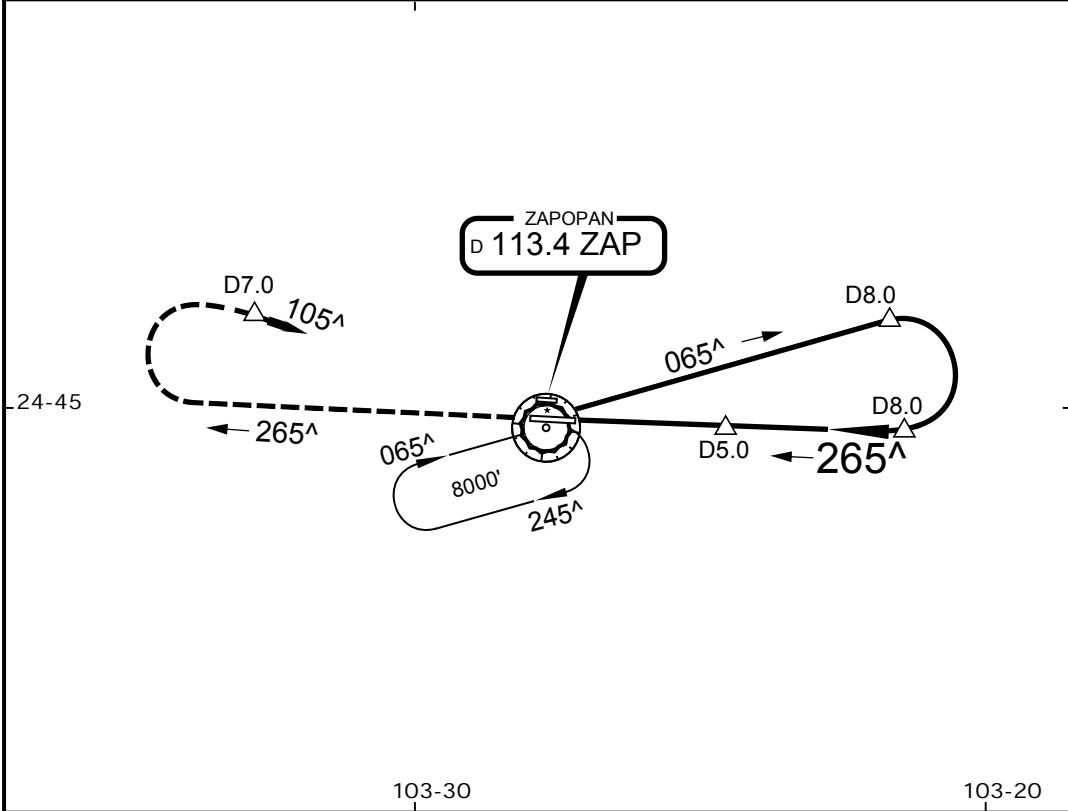


11 OCT 07

FAMV 05-5

VOR DME-1 Rwy 26

*GUADALAJARA Approach (R) 119.3 120.8		ZAPOPAN Military Flights 121.2			ZAPOPAN Tower 126.2	
VOR ZAP 113.4	Final Apch Crs 265 <sup>^</sup>	Minimum Alt D5.0 6500' (1165')	MDA(H) 5900' (565')	Apt Elev 5335'		
MISSED APCH: Climb outbound on ZAP VOR R-265, make a RIGHT teardrop turn to ZAP VOR within 10 NM to the minimum holding altitude.						
Alt Set: MB (IN on req) Apt Elev: 181 MB Trans level: FL195 Trans alt: 18500' (13165')						



MAP at VOR	PAPI	ZAP on 113.4 R-265	RT within 10 NM	ZAP 113.4
------------	------	--------------------	-----------------	-----------

CAT	STRAIGHT-IN LANDING RWY 26		Max Kts	CIRCLE-TO-LAND	
	MDA 5900'	MDH 565'		MDA(H)	
A	1	( 1600 M )	90	6100' (765') -1	
B	1 1/4	( 2000 M )	120	6220' (885') -1 3/4	
C	1 1/2	( 2400 M )	140	6380' (1045') -2	
D			165		



IVAO MEXICO SPECIAL OPERATIONS DIVISION

**ZAPOPAN AFB, MEXICO**

**MMZP**

BAM 5 ZAPOPAN  
N20 45.3 W103 27.9

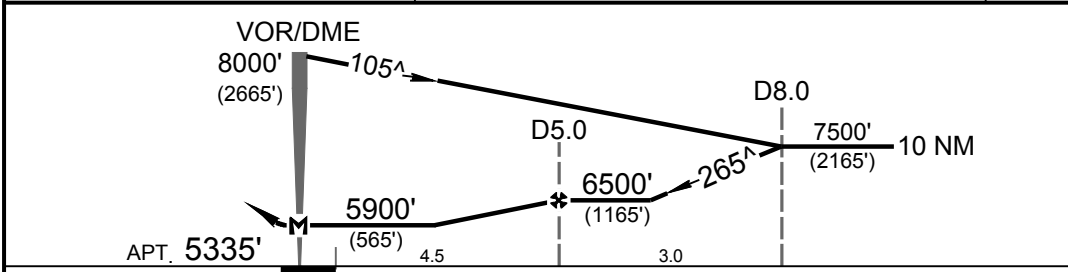
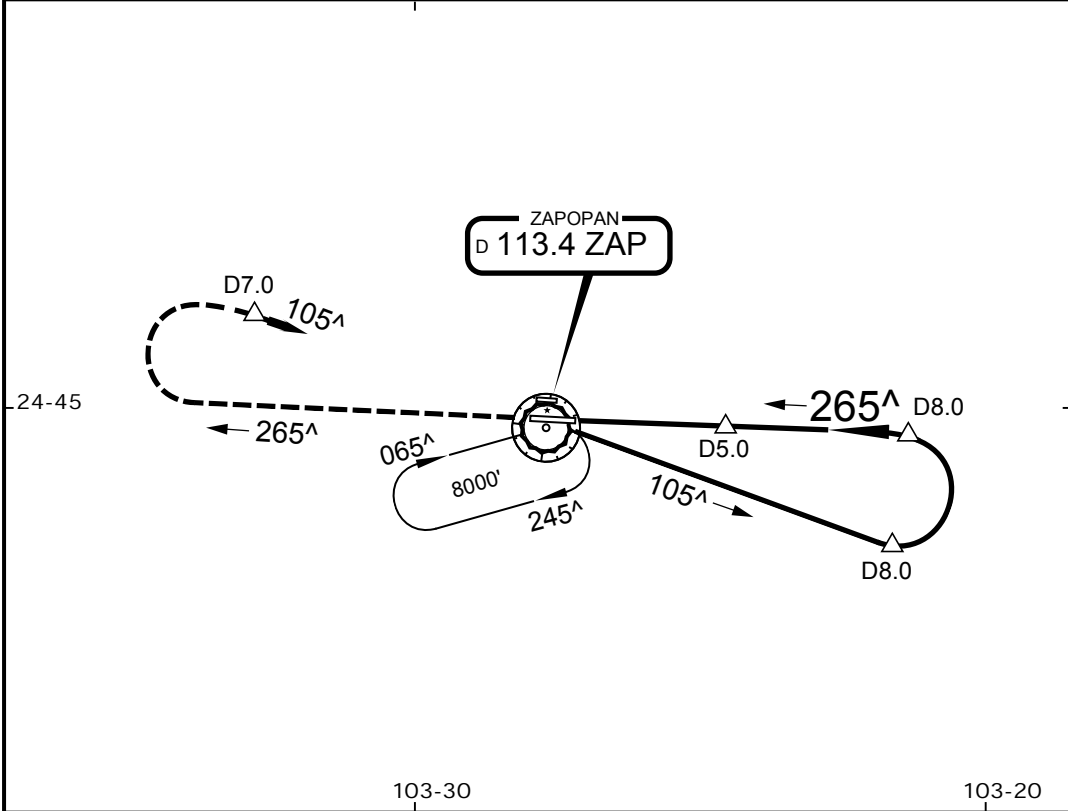
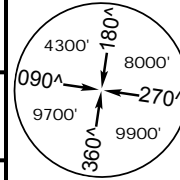


11 OCT 07

FAMV 05-6

VOR DME-2 Rwy 26

*GUADALAJARA Approach (R) 119.3 120.8		ZAPOPAN Military Flights 121.2		ZAPOPAN Tower 126.2	
VOR ZAP 113.4	Final Apch Crs 265 <sup>^</sup>	Minimum Alt D5.0 6500' (1165')	MDA(H) 5900' (565')	Apt Elev 5335'	
MISSED APCH: Climb outbound on ZAP VOR R-265, make a RIGHT teardrop turn to ZAP VOR within 10 NM to the minimum holding altitude.					
Alt Set: MB (IN on req) Apt Elev: 181 MB Trans level: FL195 Trans alt: 18500' (13165')					



MAP at VOR				PAPI	ZAP on 113.4 R-265	RT within 10 NM	ZAP 113.4
------------	--	--	--	------	--------------------	-----------------	-----------

CAT	STRAIGHT-IN LANDING RWY 26		Max Kts	CIRCLE-TO-LAND	
	MDA 5900'	MDH 565'		MDA(H)	
A	1	( 1600 M )	90	6100' (765') -1	
B	1 1/4	( 2000 M )	120	6220' (885') -1 3/4	
C	1 1/2	( 2400 M )	140	6380' (1045') -2	
D			165		



IVAO MEXICO SPECIAL OPERATIONS DIVISION

**ZAPOPAN AFB, MEXICO**

**MMZP**

BAM 5 ZAPOPAN  
N20 45.3 W103 27.9

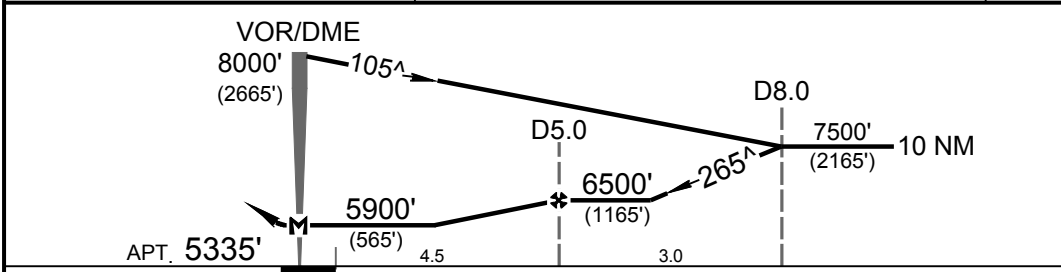
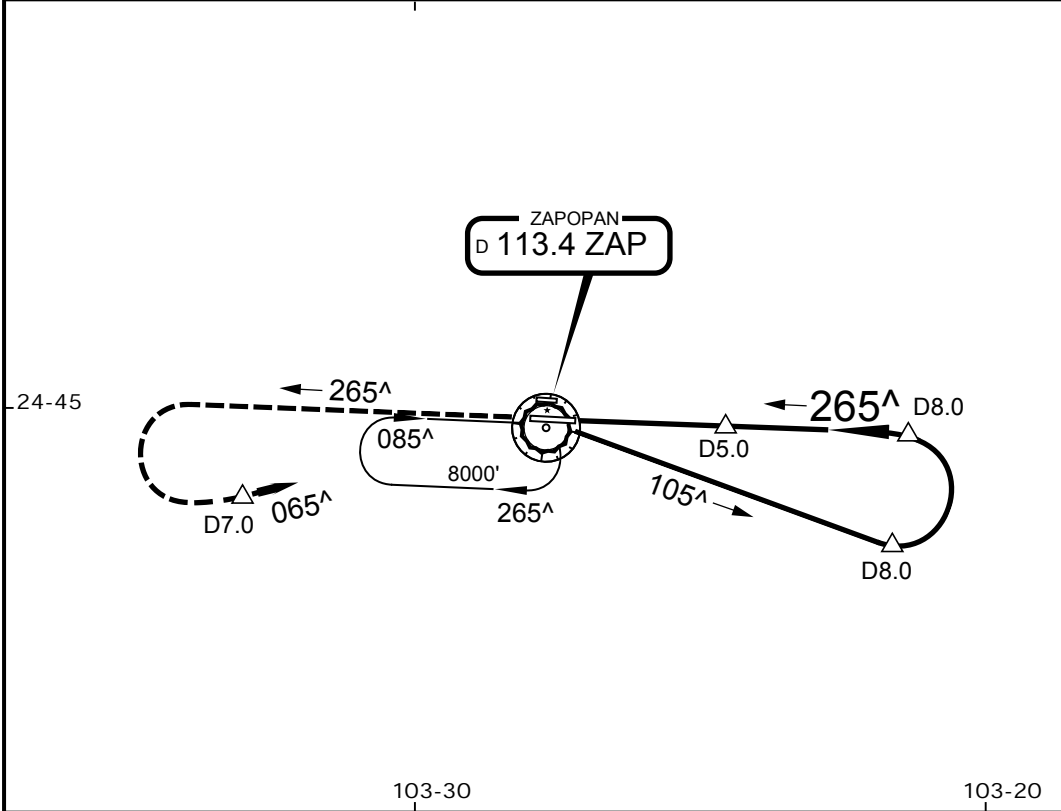


11 OCT 07

FAMV 05-7

VOR DME-3 Rwy 26

*GUADALAJARA Approach (R) 119.3 120.8		ZAPOPAN Military Flights 121.2			ZAPOPAN Tower 126.2	
VOR ZAP 113.4	Final Apch Crs 265 <sup>^</sup>	Minimum Alt D5.0 6500' (1165')	MDA(H) 5900' (565')	Apt Elev 5335'		
MISSED APCH: Climb outbound on ZAP VOR R-265, make a LEFT teardrop turn to ZAP VOR within 10 NM to the minimum holding altitude.						
Alt Set: MB (IN on req) Apt Elev: 181 MB Trans level: FL195 Trans alt: 18500' (13165')						



MAP at VOR				PAPI	ZAP on 113.4 R-265	LT within 10 NM	ZAP 113.4
------------	--	--	--	------	--------------------	-----------------	-----------

CAT	STRAIGHT-IN LANDING RWY 26		Max Kts	CIRCLE-TO-LAND	
	MDA 5900'	MDH 565'		MDA(H)	
A	1	( 1600 M )	90	6100' (765') -1	
B	1 1/4	( 2000 M )	120	6220' (885') -1 3/4	
C	1 1/2	( 2400 M )	140	6380' (1045') -2	
D			165		